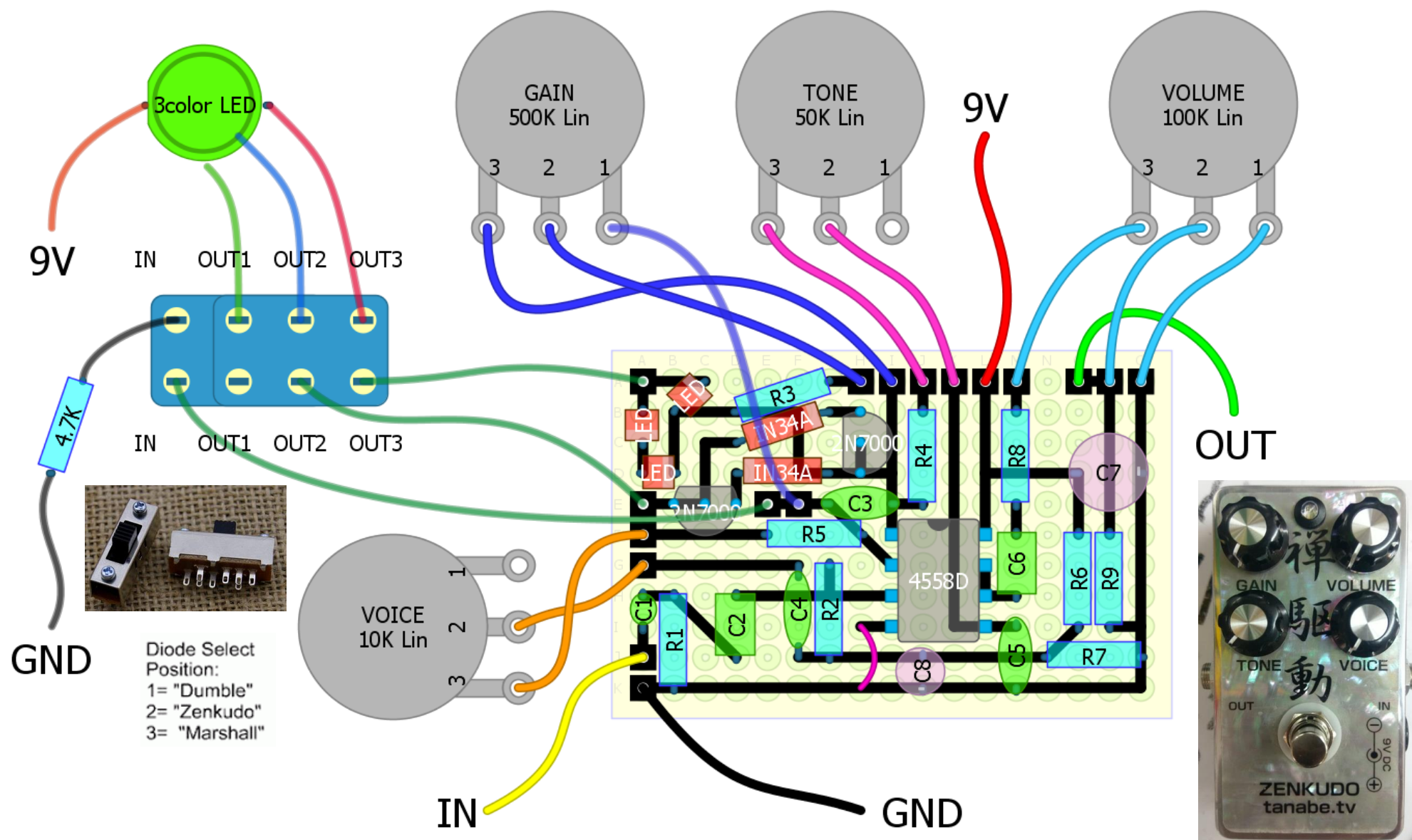




# ZENKUDO

schematic drawn by Soulsonic

Layout by KC\_solderman





# 禪驅動部品表 (ZENKUDO Bill of Materials)

<<Resistor>>		(particulars/notes)
R1	2M	(Carbon Film)
R2	470K	(Carbon Composition)
R3	10K	(Carbon Composition)
R4	10K	(Carbon Composition)
R5	1K	(Carbon Composition)
R6	10K	(Carbon Composition)
R7	10K	(Carbon Composition)
R8	1K	(Carbon Composition)
R9	2M	(Carbon Film)
RX	4 k 7	for LED

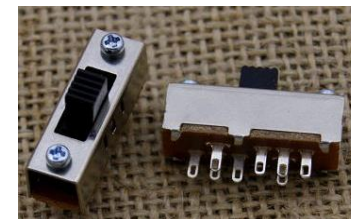
<<Capacitor>>		(particulars/notes)
C1	0.01u	(Multilayer Ceramic)
C2	0.47u	(AVX metallized polyester film)
C3	100p	(Panasonic polyester film)
C4	0.1u	(Multilayer Ceramic)
C5	0.0033u	(Panasonic polyester film)
C6	0.47u	(AVX metallized polyester film)
C7	100u	(Toshin electrolytic (Standard))
C8	47u	(Toshin electrolytic (Standard))

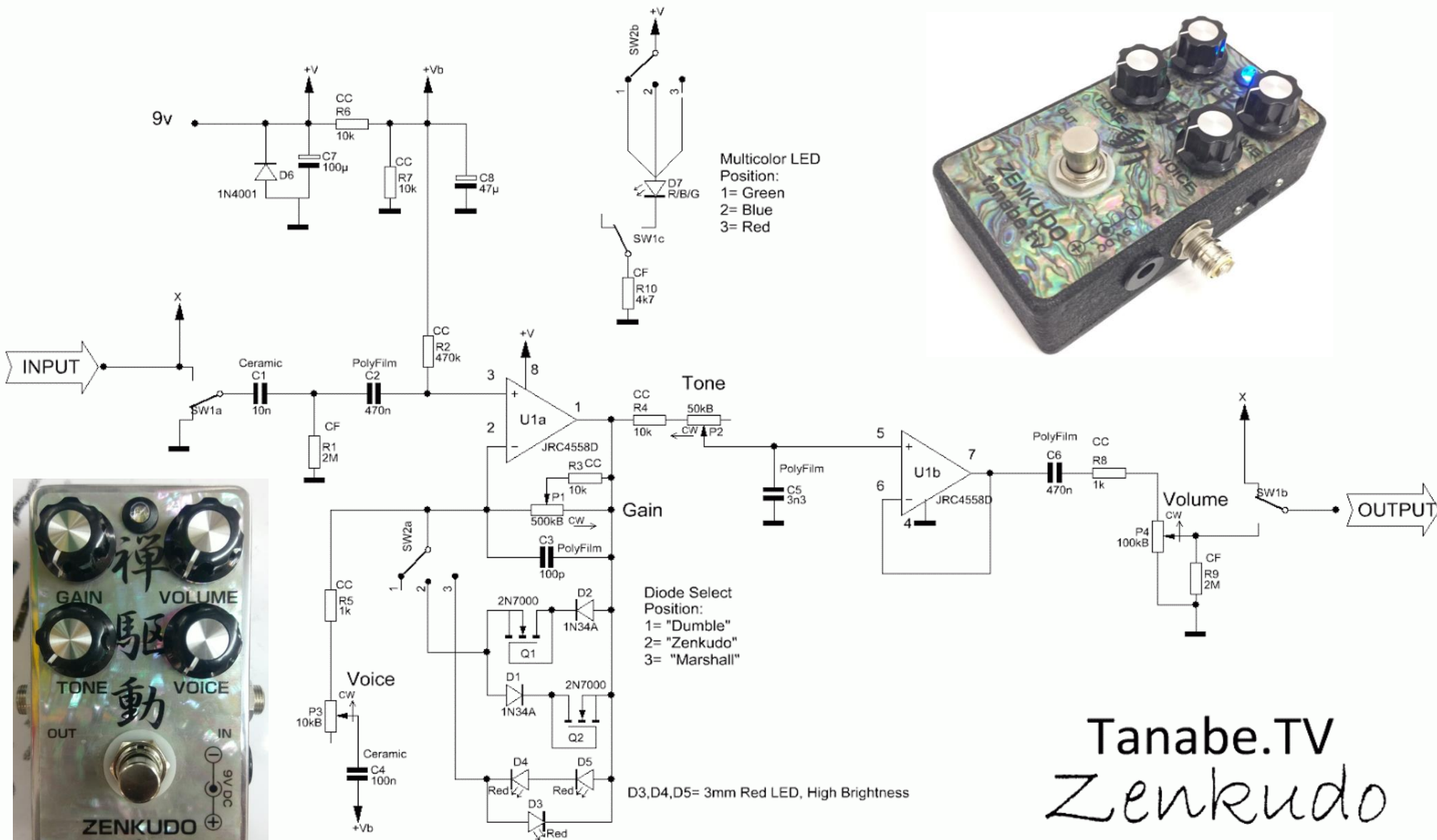
<<IC>>		(particulars/notes)
IC	JRC4558D	(1980's vintage)
Q1	2N7000	
Q2	2N7000	

<<Diode>>		(particulars/notes)
D1	1N34A	
D2	1N34A	
D3	LED Red	
D4	LED Red	
D5	LED Red	

<<Variable Resistor>>		(particulars/notes)
VOLUME	100KB	
TONE	50KB	
GAIN	500KB	
VOICE	10KB	

<<others>>		(particulars/notes)
	3 color LED	
	DP3T Slide Switch	





Tanabe.TV  
Zenkudo

Trace By, M.C. ©2009  
For, Freestompboxes.org

